

## Report about prevention and removal of scale with “**Scalewatcher**™”

### SCALEWATCHER PROVIDES BREWERY WITH LARGE COST SAVINGS

#### The company

Calanda Haldengut Brauereien in Chur, Switzerland, a daughter company of the Heineken concern, has found the solution to its hard water problems by installing Scalewatcher, an electromagnetic water treatment device, which removes lime scale from pipes and water fed equipment.



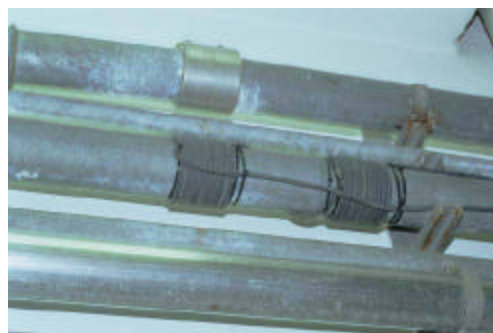
#### The problem

The brewery uses bore hole water, which has a German hardness factor of 8.9°d (or 158.42 PPM). Prior to **Scalewatcher**™ being installed the company had to dismantle and clean the plate heat exchanger every two weeks to remove lime scale build-up. This not only necessitated downtime, which stopped production but also reduced the efficiency of the heat exchanger, which did not reach the required temperature. In addition, scale blocked the pipes and reduced the flow rate.



#### The solution

Looking for a cost-effective solution to their scaling problem, the brewery looked for an alternative means of descaling. Although initially sceptical about the claims of the **Scalewatcher**™ product the company agreed to evaluate a Scalewatcher Industrial 2SM model, which was installed on the water inlet pipe feeding the main plate heat exchanger. (One pass system)



During the first six months the brewery maintenance department carried out regular inspections. They found that there was no build-up of limescale on the heat exchanger, the water temperature remained stable and the flow constant. After six months, the heat exchanger was further inspected and found to have a minimal amount of scale that equated to just two weeks without the **Scalewatcher**™ being installed. In addition, the brewery found that energy costs had been substantially reduced.

#### Conclusion

Such was the success of the **Scalewatcher**™ installation that the Calanda Haldengut Brauereien brewery had no hesitation in purchasing the unit and has since arranged for a further unit to be installed on the water inlet pipe from a new well.

---

## TELEFAX MESSAGE

Date: 27.02.01

To: Company Name :  
Place of Residence :  
Country : NL  
Attention : Rob van Mil  
Telefax Number : 0031-10-4846016  
Number of Pages (incl. infosheet) : 1  
Sender : A. Füglistner  
Copy to :

---

### Information about Scalewatcher

Dear Mr. van Mil

We have a Scalewatcher in function in our brewery since 26<sup>th</sup>. of May 2000.

Since we installed the unit we could recognize, that we have less lime in the wort cooler and that we don't have a falling performance.

We don't have measurements or figures available to answer in more detail.

Yours sincerely

**CALANDA HALDENGUT BRAUEREIEN**



Anton Füglistner