

SOFTENING DRINKING WATER WITH THE “**SCALE WATCHER**™” IN
HOTELS RESULTS IN LESS MAINTENANCE AND BIG SAVINGS

Reduced maintenance costs and lower energy bills due to calcium-free equipment

Hotels reap big benefits by installing *Scalewatcher*™

A hotel uses many litres of drinking water every day. Not only the guests in their rooms but also the cleaning personnel – and the people working in the kitchen – turn on the taps or showerheads many times a day. In most regions in the Netherlands, this will eventually result in problems because the calcium in the drinking water will accumulate and form deposits. The visible calcium deposits, although unsightly, are the least of the problem. These can still be removed. It's inside the sanitary fixtures or kitchen equipment that calcium really does its nasty work.

The removal of calcium deposits requires almost constant maintenance efforts. In the average hotel, this means a lot of man-hours. What's more, maintenance employees often use rather expensive and sometimes aggressive agents to do a good job in getting rid of the deposits. But much of this effort, costly labour and the chemical cleaning agents can be eliminated just by installing *Scalewatcher*™.

Obstructions and calcium deposits

The visible problems are found mainly in the bathrooms. Over time, various kinds of showerheads become obstructed (photo 4). The bathtub, tiles and even the walls of a shower stall will eventually accumulate a haze of hard-to-remove calcium deposits (photo 5). And taps, toilets and bidets collect calcium as well. But what about the hotel kitchen or bar where hard water leads to problems that are often much less visible? A good example is the small holes in steam ovens that have to admit steam but frequently become clogged with calcium deposits. Or the au bain marie unit and other stainless steel equipment that – also because they are subjected to high temperatures – so easily get covered in calcium deposits.

Hot water heaters

What's more, calcium deposits accumulating in hot-water heaters mean considerable reductions in the efficiency of a central heating boiler or hot water heater. Over time, a hotel will require more energy to keep its water at the desired temperature. Calcium deposits can even lead to a situation in which a central heating boiler is no longer able to keep the hot tap water at 60°C. Such a situation can have serious consequences, including Legionella bacteria. For controlling the Legionella problem, the first requirement is to keep the hot water at a constant temperature of at least 60°C. And what about hotels that also offer their guests such amenities as a swimming pool or sauna? Here again, these facilities require frequent maintenance – mostly due to calcium deposits.

Benefits you can see

In some hotels, operators have switched to using a **Scalewatcher™**. At Hotel Wildeman in Lemmer (photo 1), we installed a **Scalewatcher™**, Horeca 3 model (photo 6) in the pipe system just as the pipes enter the building (photo 2). This means that the water used in the kitchen as well as in the hotel rooms is treated. After six months, Mr Wienia, the manager of Hotel Wildeman, could already tell that their use of cleaning agents had dropped dramatically. And cleaning itself had become simpler and less time-consuming. As a supplementary measure, we installed a smaller **Scalewatcher™** (photos 3+7) on the water pipe in the bar. The drinking water in this pipe supplies the coffee machine that until then had regularly collected calcium deposits that would eventually destroy this expensive piece of equipment. Now, the installation of the **Scalewatcher™** has reduced the problem to an absolute minimum – and the coffee tastes better than ever.

Products

		Pipe diameter
1	Scalewatcher™ CM 3	25.4 mm
2	Scalewatcher™ CMN 3	25.4 mm Weatherproof
3	Scalewatcher™ CM 4	52 mm Weatherproof
4	Scalewatcher™ CMN 4	52 mm
5	Scalewatcher™ IE 4	76 mm Weatherproof
6	Scalewatcher™ Industrial 2 SM	108 mm

The **Scalewatcher™** CM 3 and CMN 3 are for small commercial companies with 1 incoming water pipe.

The **Scalewatcher™** CM 4 and CMN 4 are for small hotels/restaurants with a larger incoming water pipe.

The **Scalewatcher™** IE 4 is for medium-sized hotels/restaurants.

Here, additional units might be installed in the kitchen or the hotel swimming pool.

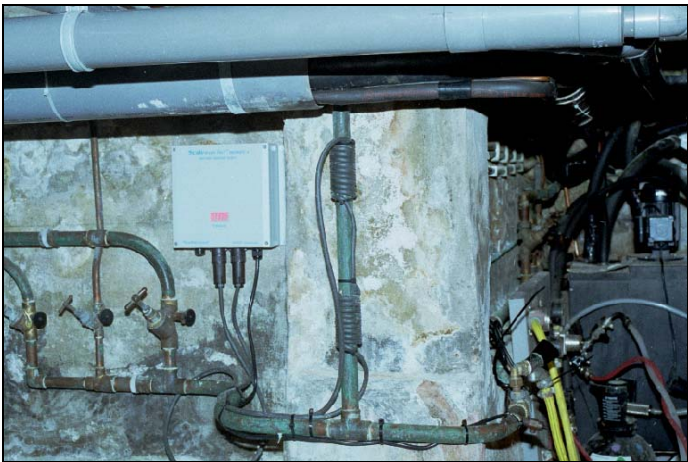
For hotels/restaurants that require the installation of more than one unit for various incoming pipes or pipes leading to the kitchen, hotel, bar and other applications, combinations of the models listed here can be used.

The **Scalewatcher™** Industrial 2 SM is for companies with a large water supply pipe.





NR. 1



NR. 2



NR. 3



NR. 4



NR. 6



NR.5



NR.7